

GOING DIGITAL

FROM CAMERA TO SHOW ENTRY IN 3 STEPS

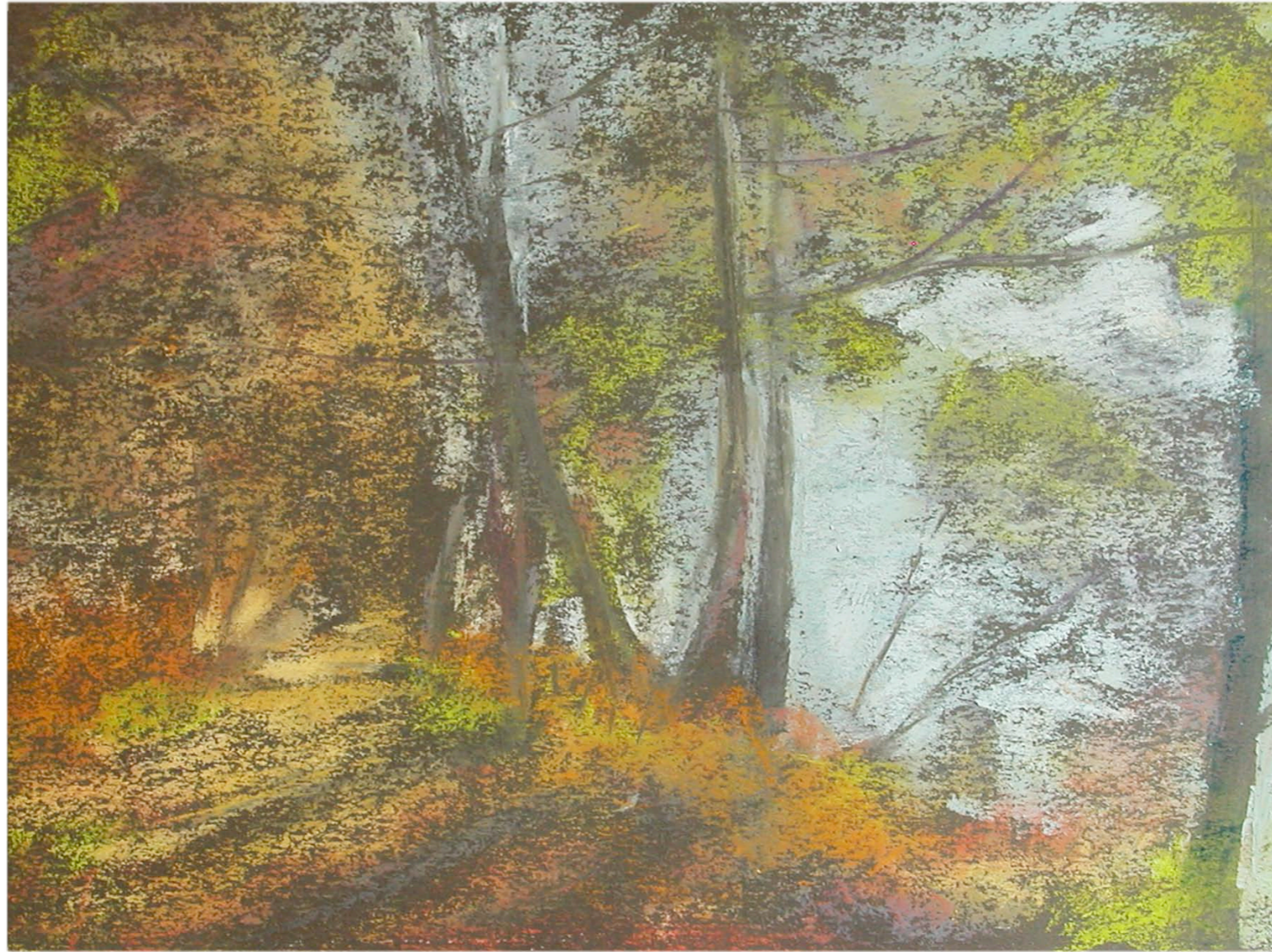
© Penny Chadwell 2008

pennychadwell@mac.com

web.mac.com/pennychadwell

THE 3 STEPS

- 1 START WITH THE HIGHEST QUALITY PHOTO YOUR CAMERA CAN TAKE
- 2 RESIZE TO CONFORM WITH SHOW PROSPECTUS SPECIFICATIONS
- 3 RENAME AND SEND FILE



STEP ONE

TAKE A GREAT PHOTO

WHAT THE HECK IS A PIXEL?

- "PIXEL" IS A COMBINATION OF THE WORDS "PICTURE" AND "ELEMENT"
- BOTH DIGITAL AND PRINT IMAGES ARE MADE OF DIFFERENT COLORED PIXELS, OR "DOTS"
- "RESOLUTION" AND "D.P.I." (DOTS PER INCH) ARE WAYS TO TALK ABOUT HOW MANY PIXELS ARE AVAILABLE TO FILL ONE SQUARE INCH OF AN IMAGE
- DIGITAL IMAGES REQUIRE ONLY 72 D.P.I.
PRINT IMAGES NEED 300 D.P.I.

TAKING YOUR PHOTO

- SET CAMERA TO HIGHEST SIZE/RESOLUTION RATIO
- USE NATURAL OR DIFFUSE ARTIFICIAL LIGHT
- USE A TRIPOD WHEN USING NATURAL INDOOR LIGHT
- BE SURE PAINTING AND TRIPOD ARE PARALLEL TO AVOID PARALLAX
- TRY TO FILL VIEWFINDER WITH YOUR IMAGE SO THAT YOU DON'T CROP AWAY VALUABLE PIXELS
- USE CAMERA TIMER OPTION TO AVOID CAMERA JIGGLE AND SUBSEQUENT BLUR

RESOLUTION SETTINGS AND YOUR CAMERA

- BECAUSE OF PIXELS, THERE IS AN INVERSE RELATIONSHIP BETWEEN IMAGE SIZE AND RESOLUTION
- ALSO AN INVERSE RELATIONSHIP BETWEEN POSSIBLE NUMBER OF PHOTOS AND RESOLUTION
- A GOOD RULE OF THUMB IS TO CHOOSE THE SETTING THAT TAKES THE FEWEST NUMBER OF PHOTOS

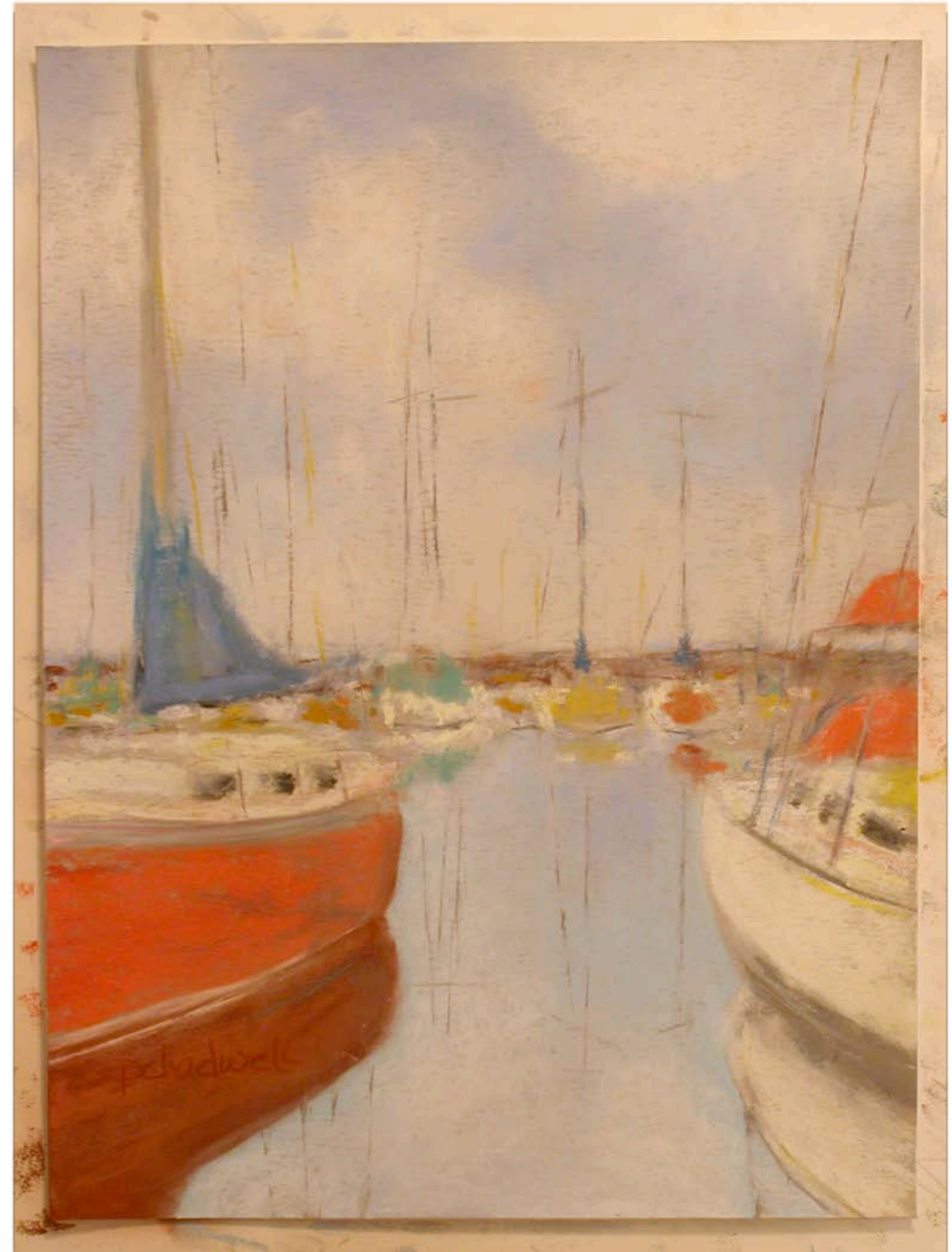
Image Capacity vs Resolution/Quality 32MB Memory Card		Hi	Fine	Normal	Basic
Full Resolution 2560x1920	Images (Avg size)	1 14.7 MB	12 2.6 MB	25 1.3 MB	51 0.6 MB
	Approx. Compression	1:1	6:1	12:1	24:1
UXGA Resolution 1600x1200	Images (Avg size)	-	32 1.00 MB	62 0.52 MB	117 0.27 MB
	Approx. Compression	-	6:1	11:1	21:1
SXGA Resolution 1280x960	Images (Avg size)	-	49 0.65 MB	94 0.34 MB	171 0.19 MB
	Approx. Compression	-	6:1	11:1	20:1
XGA Resolution 1024x768	Images (Avg size)	-	75 0.43 MB	138 0.23 MB	241 0.13 MB
	Approx. Compression	-	6:1	10:1	18:1
VGA Resolution 640x480	Images (Avg size)	-	217 0.15 MB	286 0.11 MB	455 0.07 MB
	Approx. Compression	-	6:1	8:1	13:1
(3:2) 2560x1704	Images (Avg size)	-	22 1.5 MB	28 1.1 MB	55 0.6 MB
	Approx. Compression	-	9:1	12:1	22:1

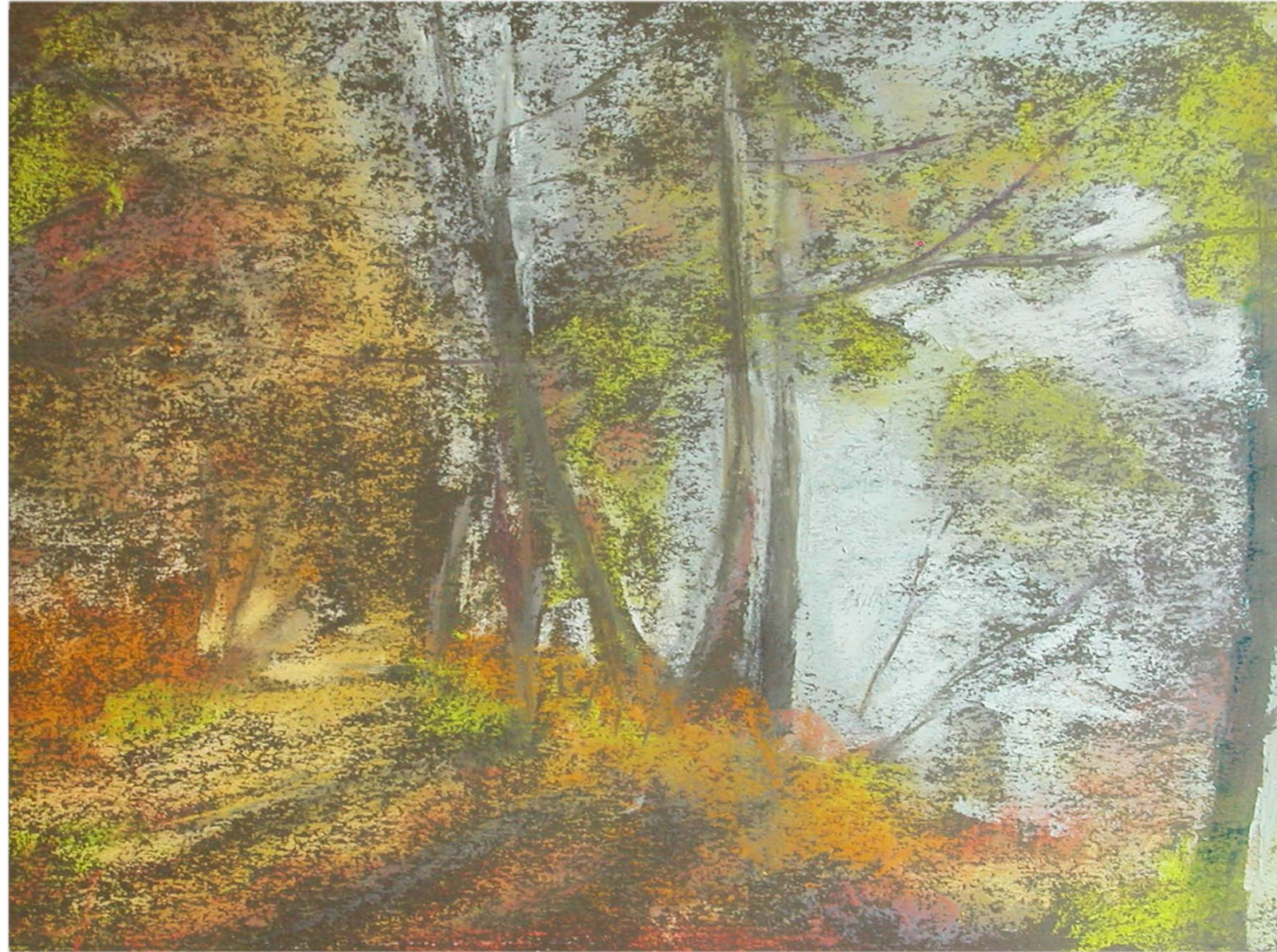


PARALLAX IS EASIER TO AVOID THAN TO REPAIR.
MAKE SURE YOUR CAMERA AND PAINTING ARE PARALLEL

FILL YOUR VIEWFINDER

- DON'T CROP AWAY ALL THOSE VALUABLE PIXELS
- ZOOM IN OR REPOSITION YOUR TRIPOD TO ELIMINATE ALL THE BACKGROUND CLUTTER POSSIBLE
- ONE MORE CLOSE CROP WILL MAKE YOUR IMAGE READY FOR THE JUROR





STEP TWO

RESIZE TO PROSPECTUS SPECS

COMMON DIGITAL ENTRY CONVENTION

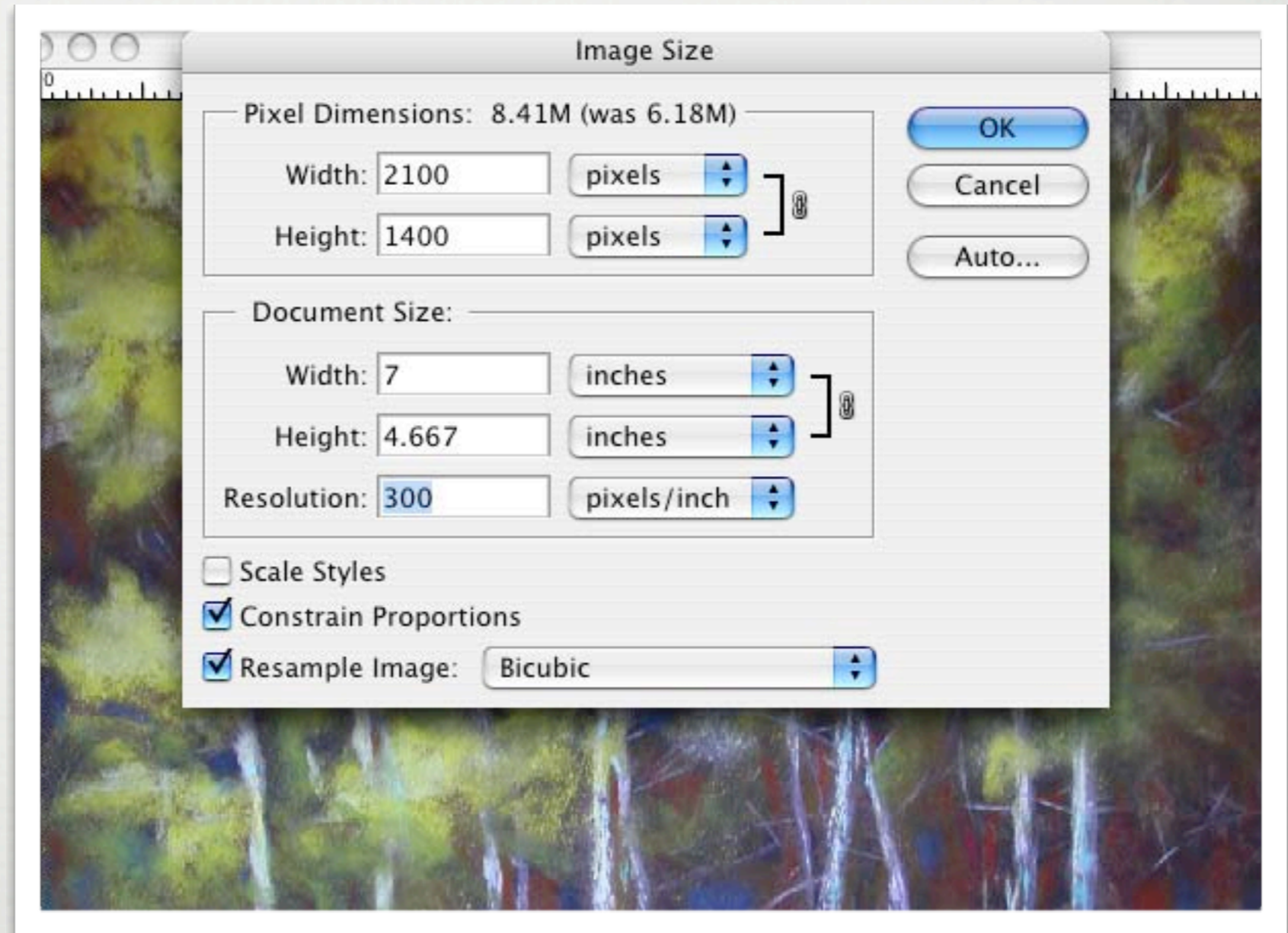
- RESIZE YOUR IMAGE TO 1800 PIXELS ON LONGEST EDGE (APPROXIMATELY 4" X 6" AND 300 D.P.I)
- SAVE USING NAMING CONVENTION SPECIFIED IN THE PROSPECTUS:
YOURNAME.PAINTINGNAME.WIDTHXHEIGHT
- SAVE FILE AS A HIGH QUALITY JPEG

RESIZE YOUR IMAGE



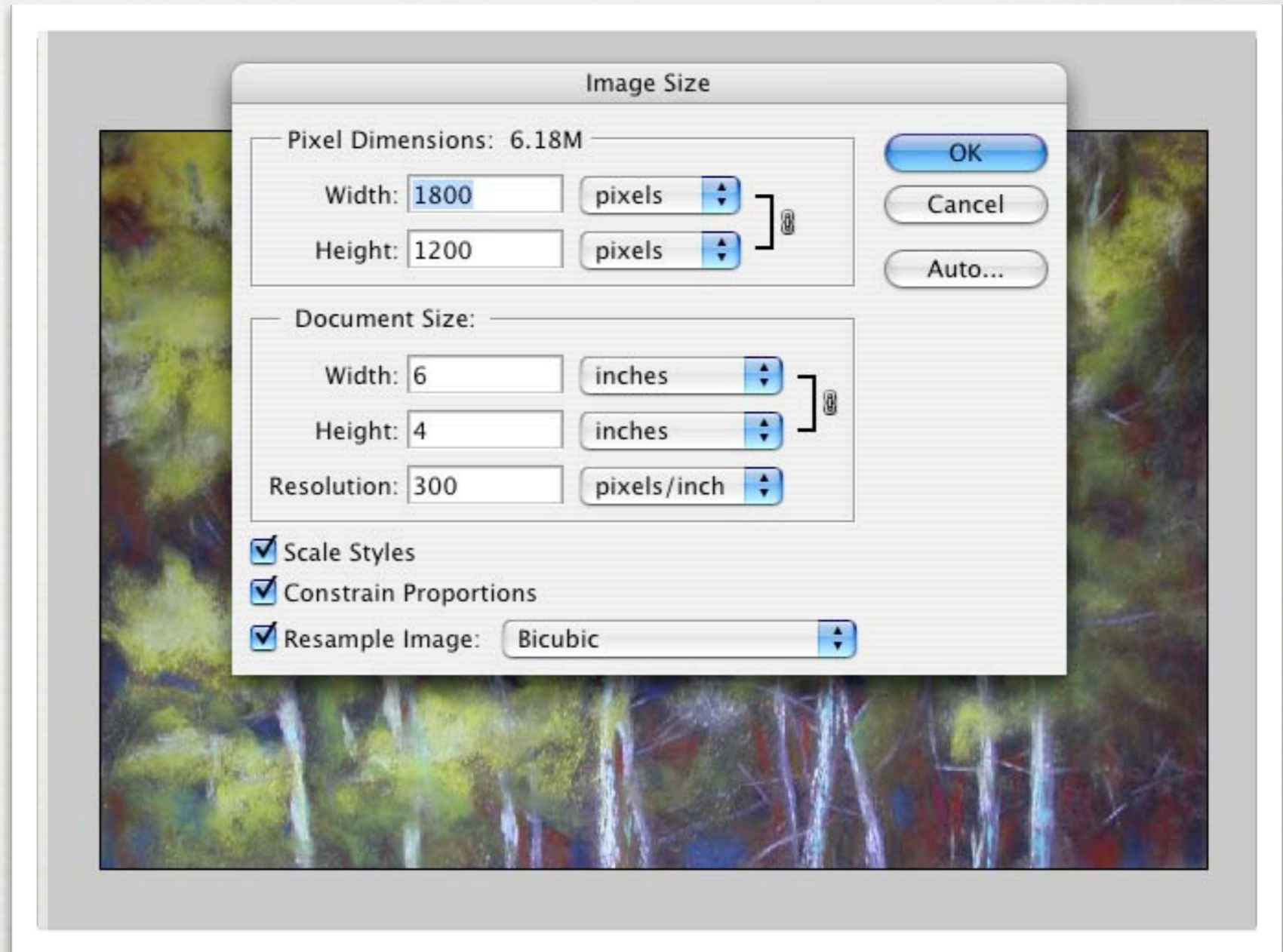
RESOLUTION AND SIZE

- ORIGINAL IMAGE SIZE IS 2100 X 1400 PIXELS
- WILL BE RESIZED TO 1800 WIDTH, VARIABLE HEIGHT



CORRECT ENTRY DIMENSIONS

- 1800 PIXELS ON LONG EDGE
- HEIGHT CAN VARY ON SHORT EDGE



MAKE YOUR IMAGE EASIER FOR THE JUROR TO VIEW

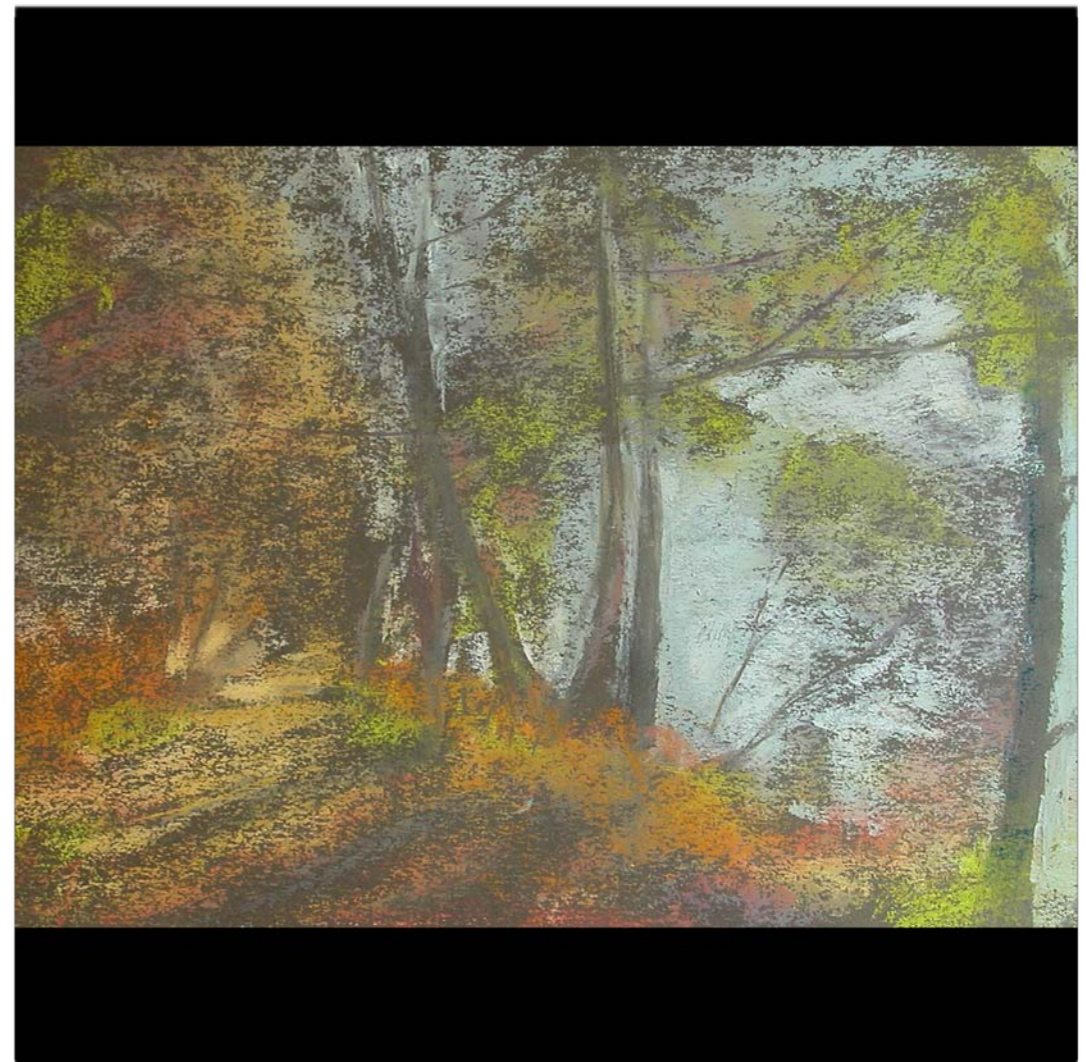
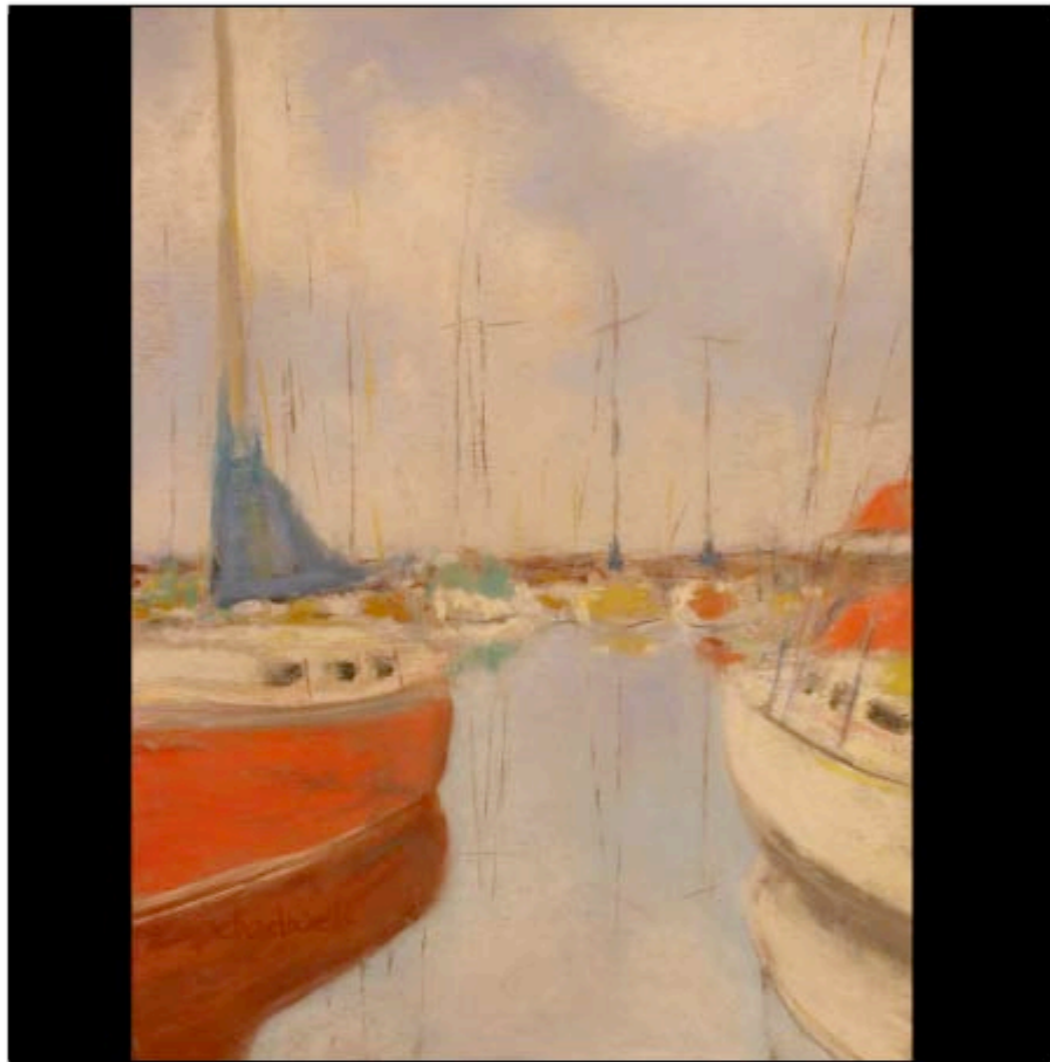
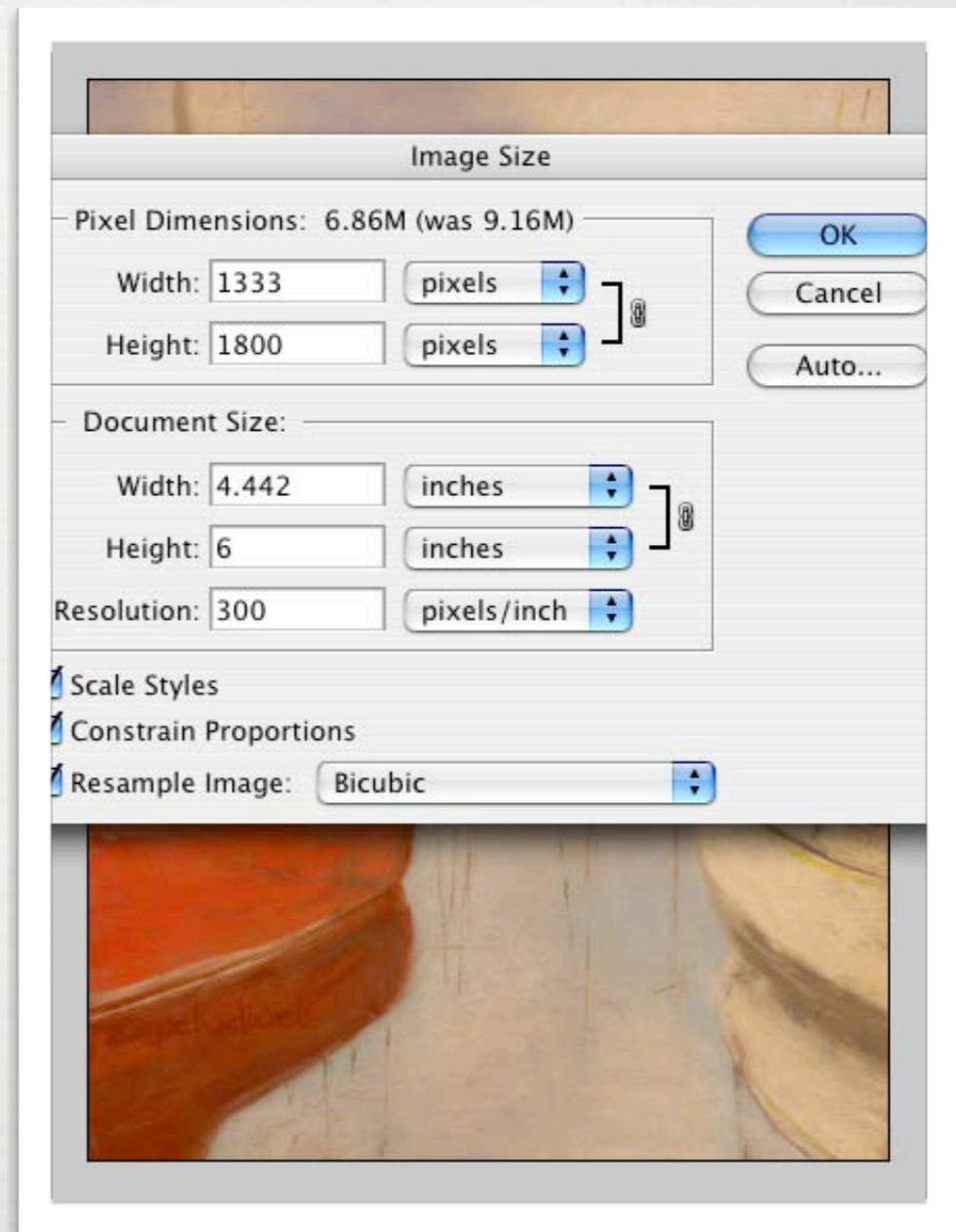


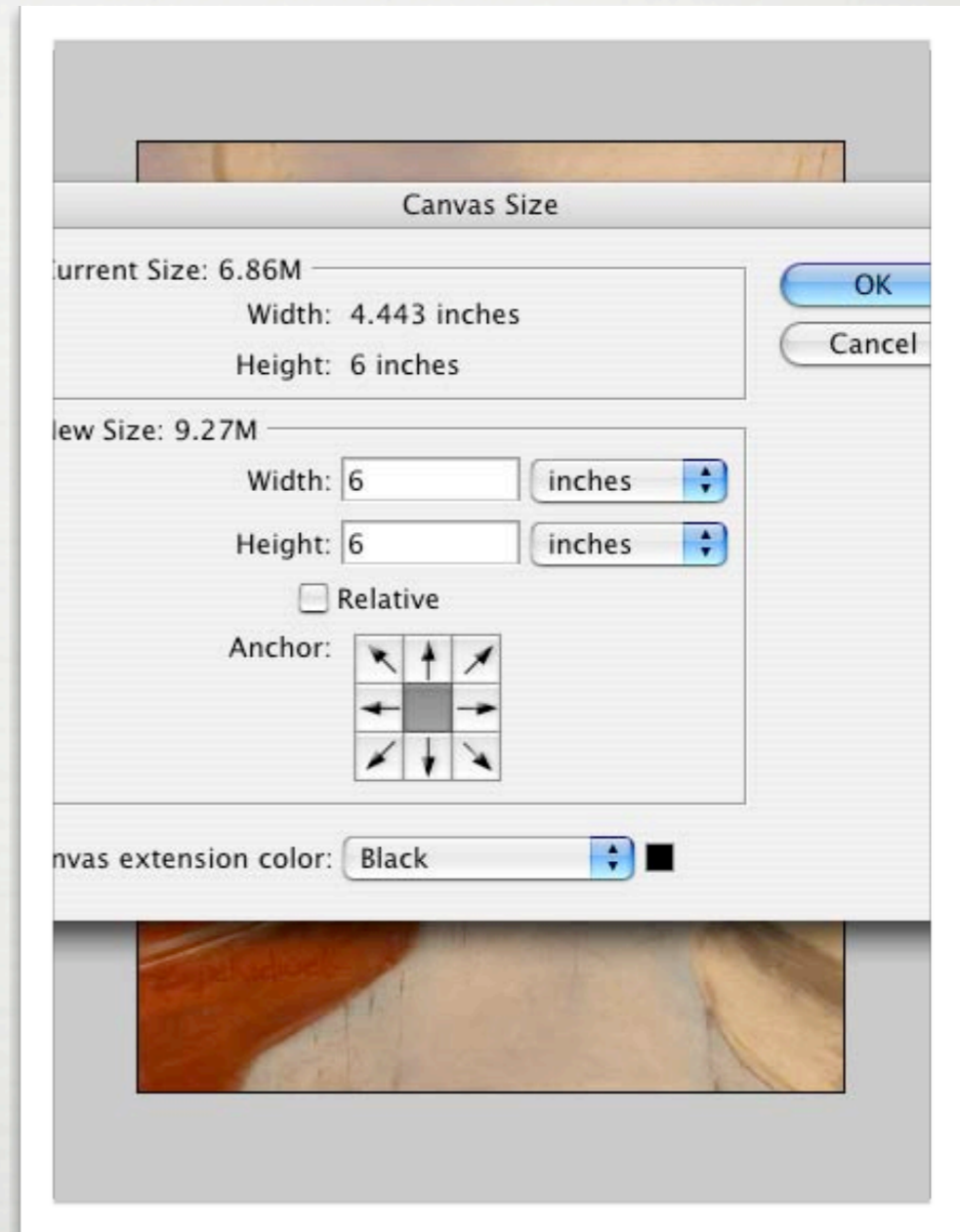
IMAGE HAS ONE EDGE MEASURING 1800 PIXELS

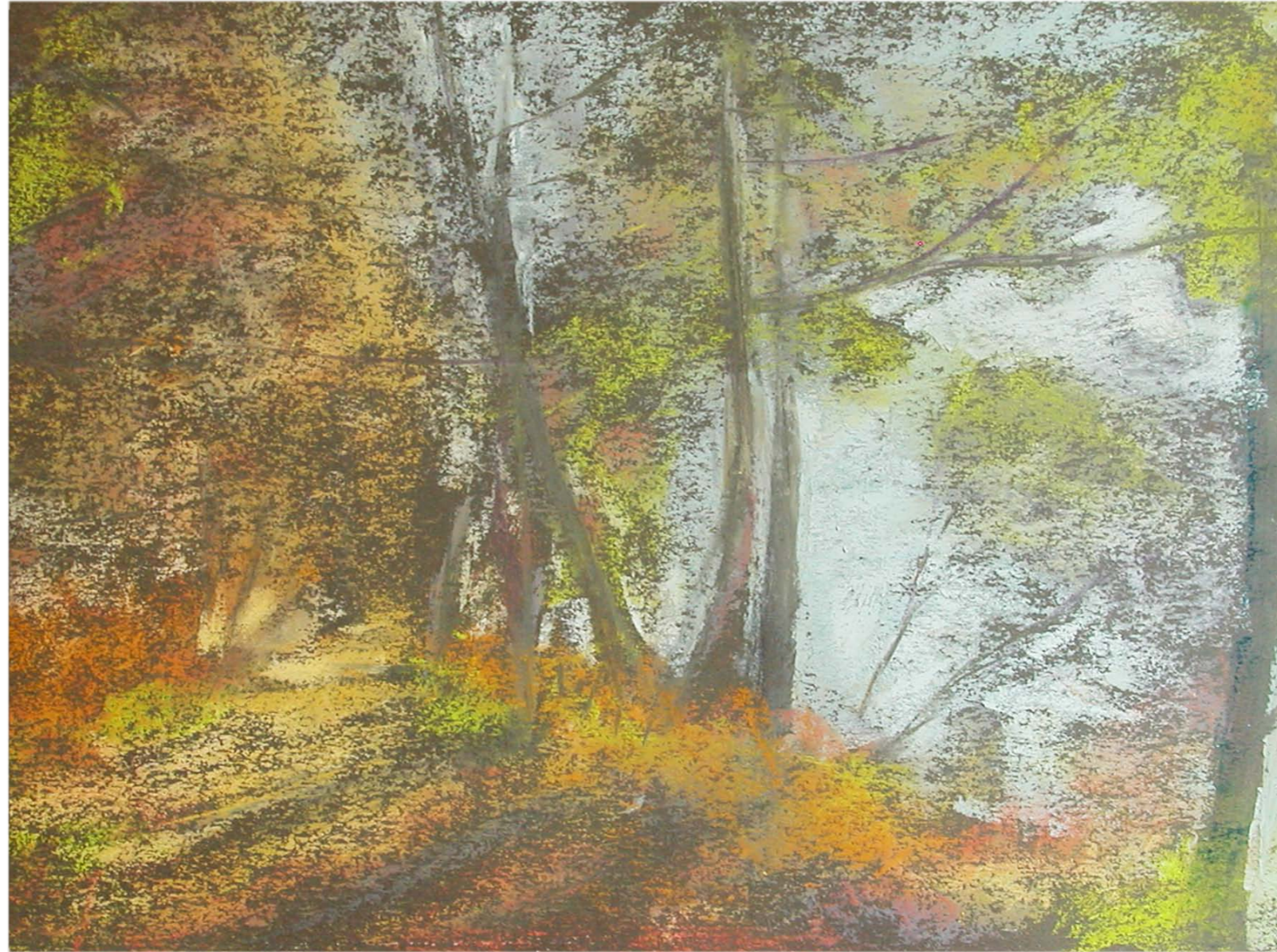
- CREATE A SQUARE IMAGE BY ADDING BLACK BACKGROUND TO THE SHORT EDGE OF THE IMAGE



RESIZING THE CANVAS

- SIZE BOTH EDGES OF THE BACKGROUND EQUALLY
- 1800 PIXELS = 6 INCHES
- CHOOSE BLACK FOR YOUR BACKGROUND COLOR





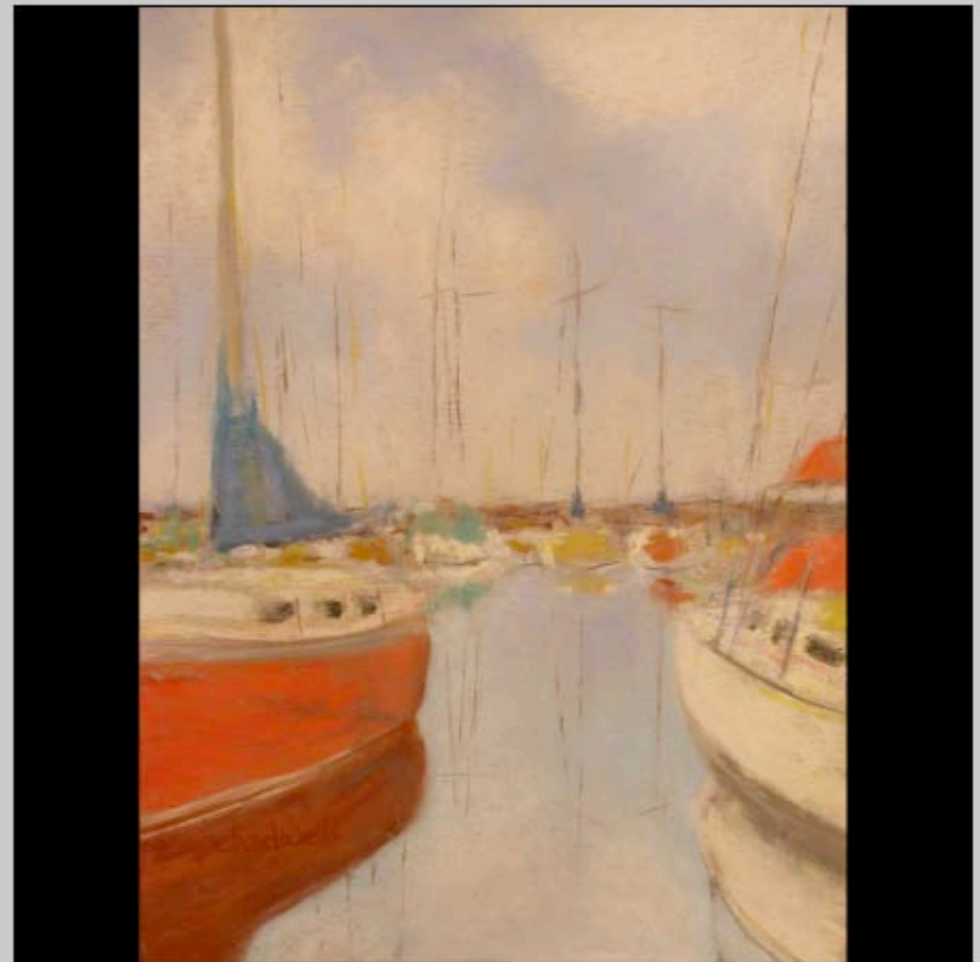
STEP THREE

RENAME AND EMAIL YOUR ENTRY

RENAME ENTRY

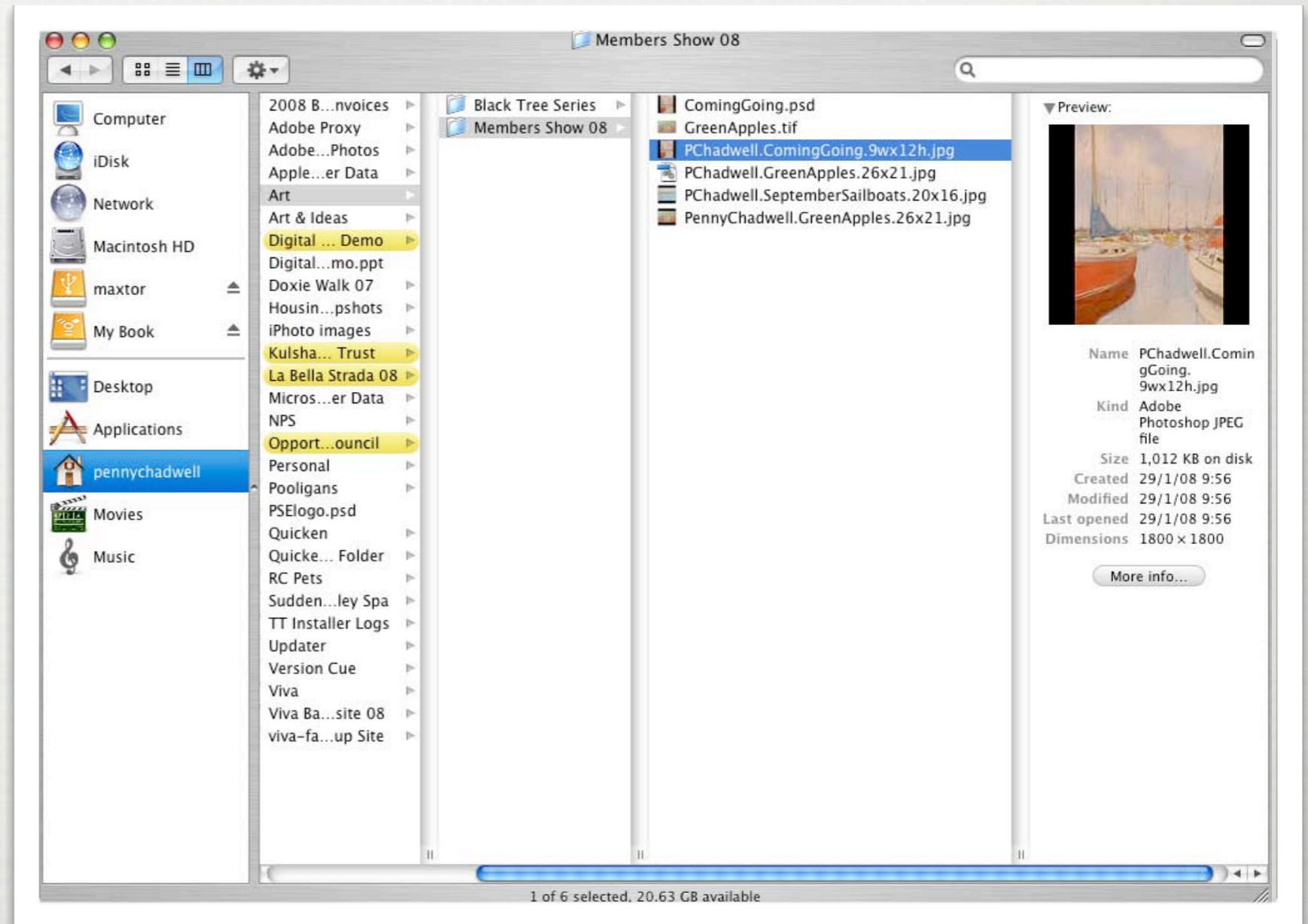
CHADWELL.COMING_GOING.9WXI2H.JPG

- USE THE NAMING CONVENTION SPECIFIED IN THE PROSPECTUS
- USE ONLY LETTERS, DASHES OR UNDERSCORE
- USE NO SPACES



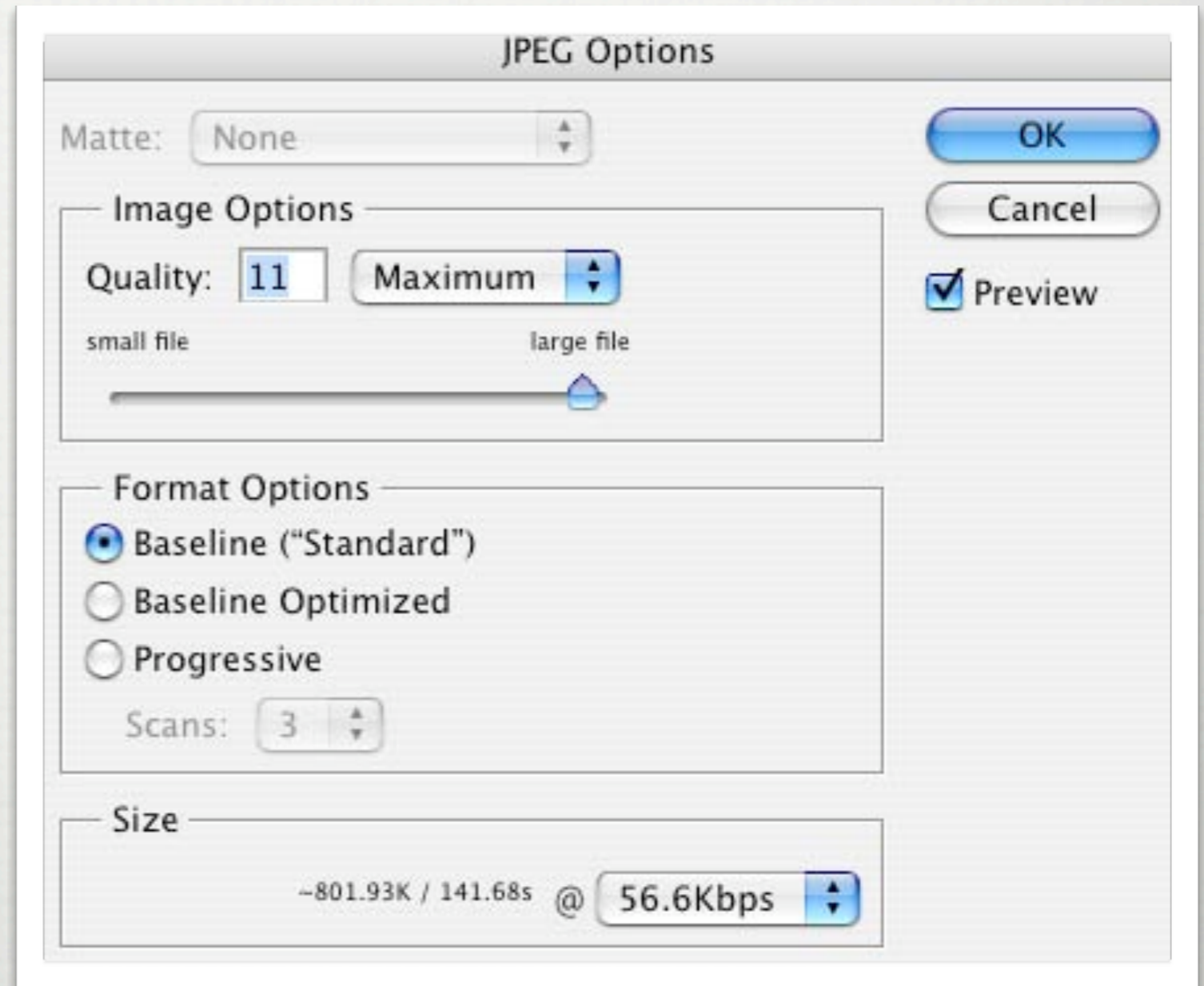
SAVING YOUR IMAGES

- CREATE A FOLDER "MEMBERS SHOW 08"
- SAVE AS HIGH QUALITY JPEG



JPEG SAVING OPTIONS

- CHOOSE THE HIGHEST QUALITY IMAGE THAT YOUR SOFTWARE OFFERS



EMAIL YOUR ENTRY

- ONE IMAGE PER EMAIL
- SUBJECT LINE HAS NAME OF THE SHOW
- MESSAGE SHOULD INCLUDE YOUR NAME AND THE NAME AND ENTRY NUMBER OF YOUR PIECE

